



🛏 4 🛒 2.5 🚗 2

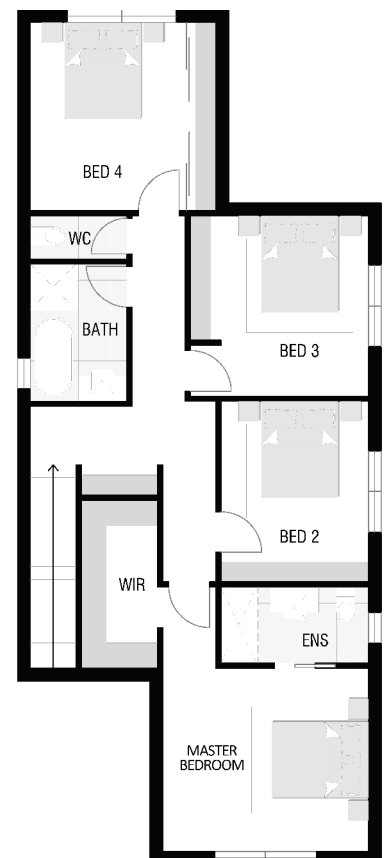
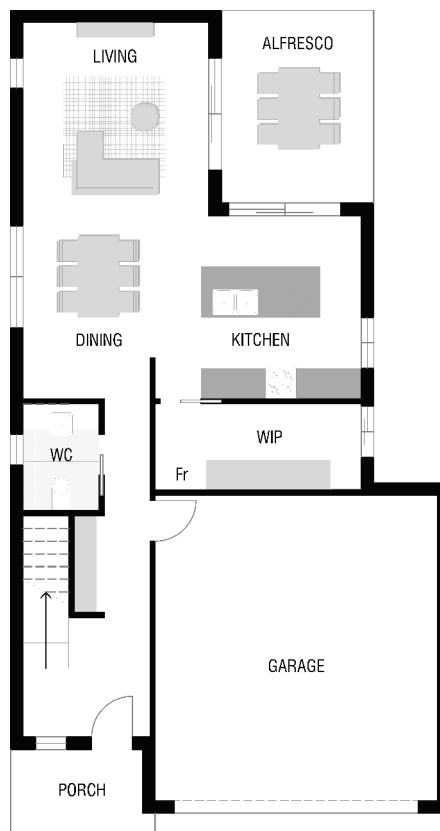
## MARYVILLE DIMENSIONS

### Dimensions

Total house size	207 m <sup>2</sup>
House length	15.98 m
House width	8.70 m
Fits lot width	10 m

### Areas

Living Area	253.46 m <sup>2</sup>
Garage	35.38 m <sup>2</sup>
Porch	6.47 m <sup>2</sup>
Alfresco/court	39.09 m <sup>2</sup>
Total	334.40 m <sup>2</sup>
	35.99 sqm



\*Photos and images are for illustrative purposes only and may include additional items that are not supplied by Arcadia Homes QLD. All dimensions and measurements shown are indicative only, please contact Arcadia Homes QLD for more information.

\*All floor plans can be flipped and altered to fit your block.

☎ Call 07 5325 1857

✉ [build@arcadiahomesqld.com.au](mailto:build@arcadiahomesqld.com.au)

📍 [www.arcadiahomesqld.com.au](http://www.arcadiahomesqld.com.au)